



SCAN ME for Presentation

# Rivers Edge Greenway

Presented to the  
Clayton County Board of Commissioners  
August 24, 2021

# Rivers Edge Greenway

## Survey Results

The QR code is a link to actual results



- Purpose:
  - To get a better understanding of what the citizens want to become of the Rivers Edge Greenway
- Process:
  - 3500 postcard surveys went out to the Panhandle Residents
  - Survey QR Codes were shared with the Rivers Edge HOA as well as other HOA contacts to distribute
  - The survey consisted of 8 questions

# Rivers Edge Greenway

## Survey Results

The QR code is a link to actual results

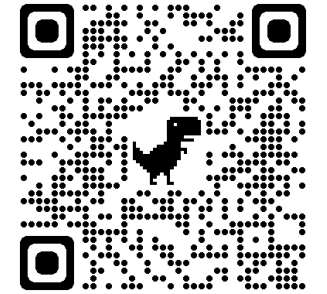


- Methodology:
  - Survey was completed electronically
  - Respondents may have received a QR code, postcard or link to complete the survey.
- Results:
  - 3500 surveys went out to the Panhandle Area Residents
  - Survey QR Codes were shared with the Rivers Edge HOA as well as other HOA contacts to distribute

# Rivers Edge Greenway

## Survey Results

The QR code is a link to actual results



- We had 680 postcards returned via USPS
- We had 173 citizens respond to the survey
- 87% of the responders lived in a subdivision
- 20% of the responders property adjoin the Greenway
- 40% of the responders wanted a Combination of Golf Course and Nature Trails
- 25% wanted an 18 hole golf course

# Rivers Edge Greenway

## Survey Results

The QR code is a link to actual results



- Some of the ideas from the Citizens are:
- Lease the land to the HOA and they manage the Driving Range and Clubhouse
- Community Clubhouse / Restaurant
- Demo the buildings and return to Nature
- Top Concern of Residents: Safety, Maintenance/ upkeep

# Rivers Edge Greenway

## Homeowners Meetings

- Homeowner input from HOA Meetings
  - Homeowners want the old golf course to be maintained to a higher standard
  - Homeowners want their property values to improve
  - Homeowners prefer the greenway to be for property owners only.
  - Security is a top concern

# Rivers Edge Greenway

## Existing Facility Conditions

- Clubhouse
- Cart Barn
- Pavilion Area
- Maintenance Barn
- Small Lake with pump house
- The Existing Trail



# Rivers Edge Greenway

## Existing Facility Conditions

- Clubhouse





# Rivers Edge Greenway

## Existing Facility Conditions

- Clubhouse



# Rivers Edge Greenway

## Existing Facility Conditions

- Cart Barn



# Rivers Edge Greenway

## Existing Facility Conditions

- Pavilion Area



# Rivers Edge Greenway

## Existing Facility Conditions

- Maintenance Barn



# Rivers Edge Greenway

## Existing Facility Conditions

- Small Lake with pump house



# Rivers Edge Greenway

## Existing Facility Conditions

- The existing trail



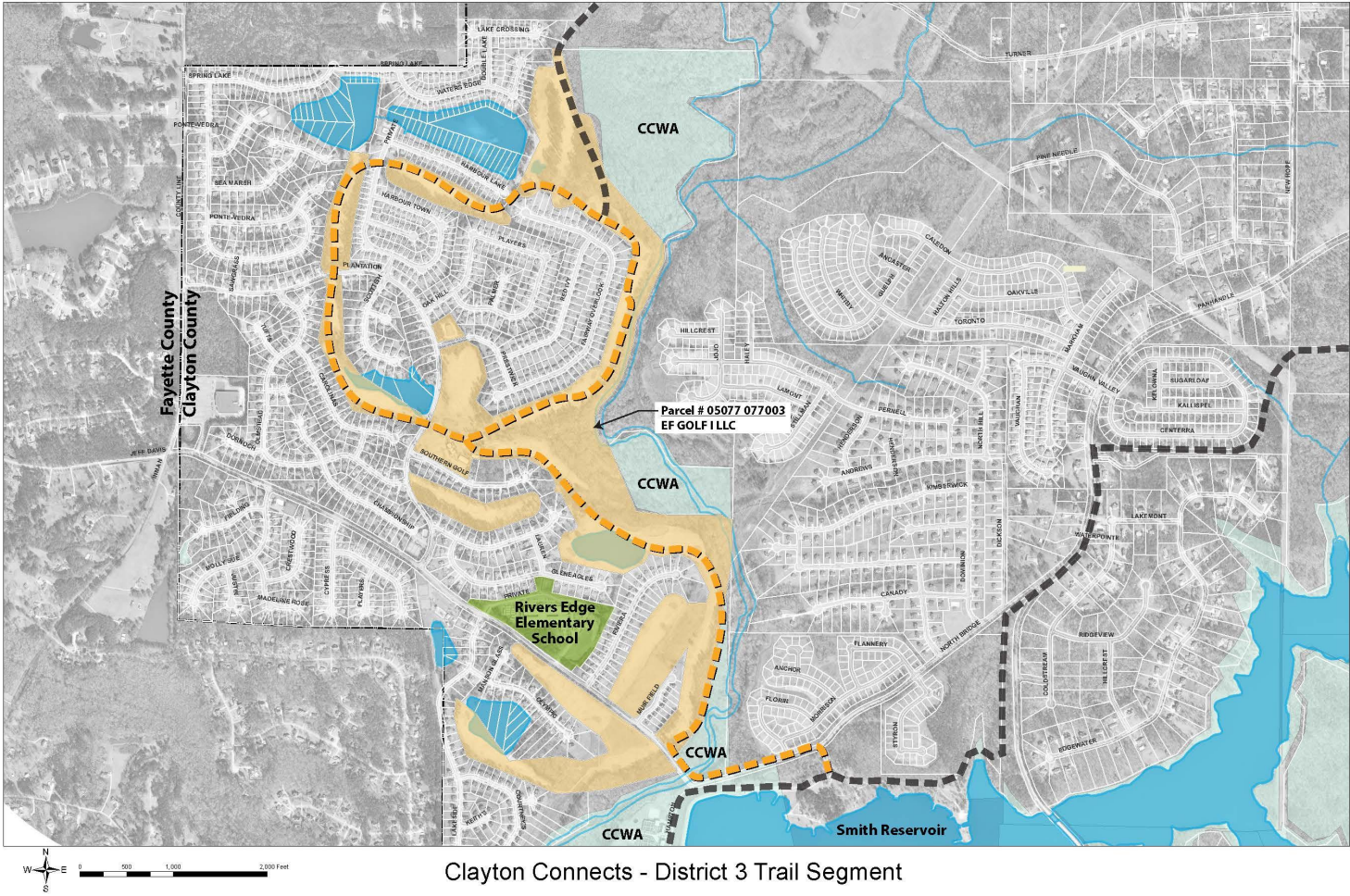
# Rivers Edge Greenway

## Existing Facility Conditions

- The existing Property



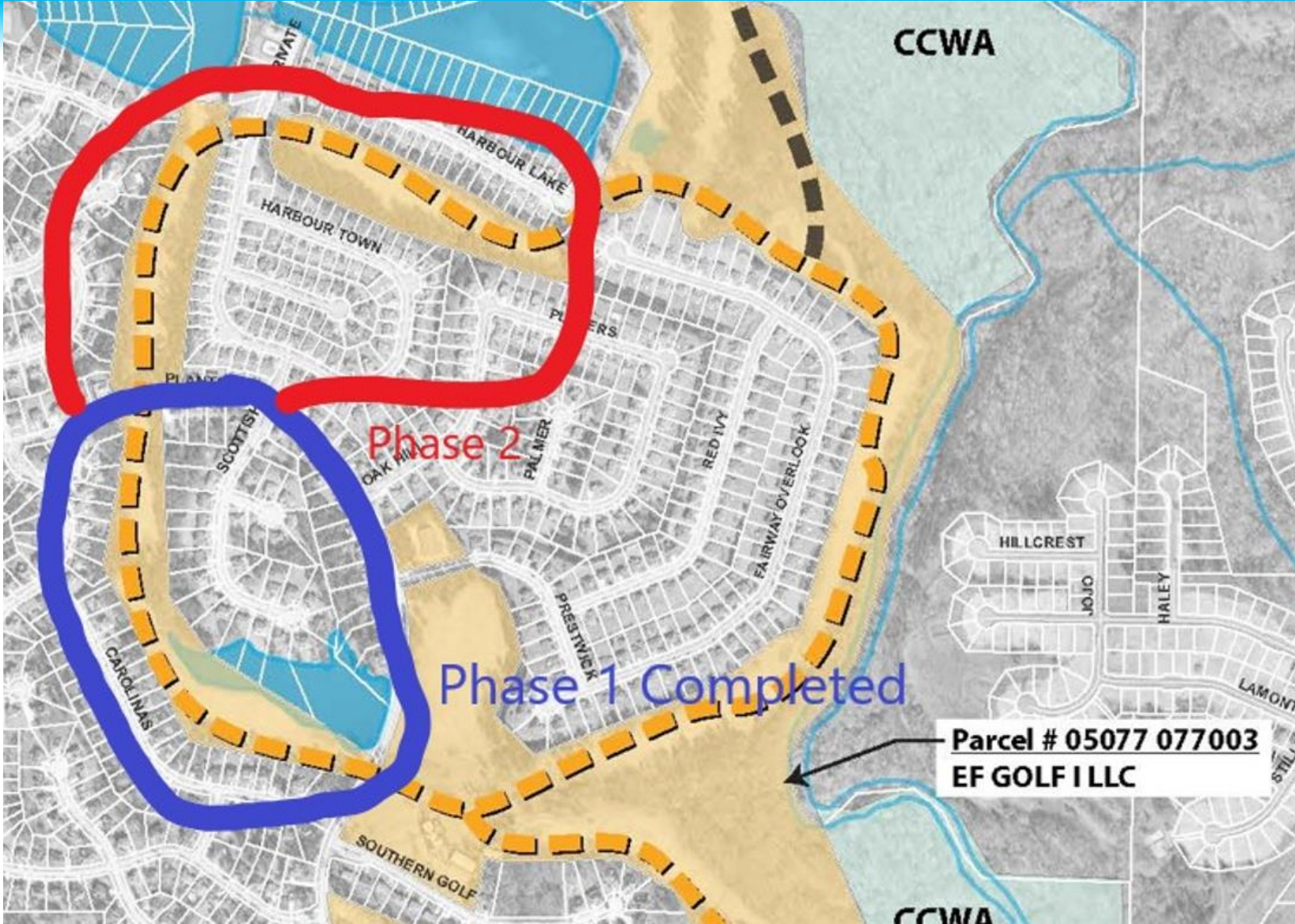
# Rivers Edge Greenway



Clayton Connects - District 3 Trail Segment









CCWA

Parcel # 05077 077003  
EF GOLF I LLC

CCWA

Rivers Edge  
Elementary



# Rivers Edge Greenway

## Parks & Recreation Recommendations

- Phase 1 was completed using “In-House” resources.
  - \* Parks & Recreation, Refuse and Transportation & Dev.
- Phase 2
  - \* Work with Central Services to develop an Request For Proposal to place the trail development out to bid.
  - \* The RFP will be for a cost per foot of clearing a 30’ wide area along the existing cart path. To include a 10’ wide asphalt sidewalk.

# Rivers Edge Greenway

## Parks & Recreation Recommendations

- Funding will be available in the 2020 SPLOST Funding
  - \* Utilizing Parks & Recreation Greenspace Acquisition Funds
- After review of the Maintenance Barn, Parks & Recreation could utilize the area for a South End Maintenance Hub. Saving on Time and Gas

# Rivers Edge Greenway

## Parks & Recreation Recommendations

- Potential renovation of the existing Cart Barn and Pavilion to use for Rental Revenue
- Lease the land to the HOA and the HOA can manage the Driving Range and Clubhouse.

# Rivers Edge Greenway

## Survey Marketing

### OLD RIVERS EDGE GOLF COURSE SURVEY

Quality of life and leisure projects are in development and under renovation in Clayton County Parks and Recreation.

Your input matters. Scan the QR code or access the link below to take the Rivers Edge community survey.

Tell us what you would like to see at the Old Rivers Edge golf course.

Complete the survey by July 31, 2021.



Hard copies of the survey are available at the South Clayton Recreation Center, located at 1837 McDonough Road, Hampton, GA 30228.



[www.surveymonkey.com/r/ RiversEdgeGreenway](http://www.surveymonkey.com/r/RiversEdgeGreenway)

Parks and Recreation

# Rivers Edge Greenway

## Next Steps

- Upon your recommendations to the Chief Operation Officer, a Resolution will be brought before the Board of Commissioners on September 7<sup>th</sup> to ratify your decision.



SCAN ME for Presentation

# Rivers Edge Greenway

Thank you! Please scan for a copy of the presentation  
Parks & Recreation Department  
August 24, 2021