

Why Build Greenway Trails in Clayton County?



Millennials in Motion



- Changing travel habits in Young Americans
- Desires for walkable/bikeable communities

1. Health and Wellness



- County's ability to compete for industry and workers
- Citizen's physical and mental health

2. Alternative Transportation



- Less dependency on cars.
- Less need for transportation infrastructure to support cars.

3. Quality of Life



- Social interaction; neighborhood cohesiveness
- Close by recreational amenity
- Security



PATH Organization



- Public-private partnerships with State, Counties, and Cities
- Partnerships vary in form from contracts to a handshake
- Partnerships facilitate fundraising and fast tracking

Why partner with the PATH Foundation?



- Built over 200 miles of greenway trails.
- Raised over \$35 Million from private sector for trail development.
- Caused \$90 Million to be allocated from public sector for trails.

How the PATH Foundation partners

Public-Private Partnership

PATH

- Provides expertise and experience
- Oversees design and construction at no cost
- Raises money in private sector to assist with funding



County

- Use of County-owned property and acquisition of additional parcels (reword to sound better)
- Funding including SPLOST
- County staff for review and guidance?

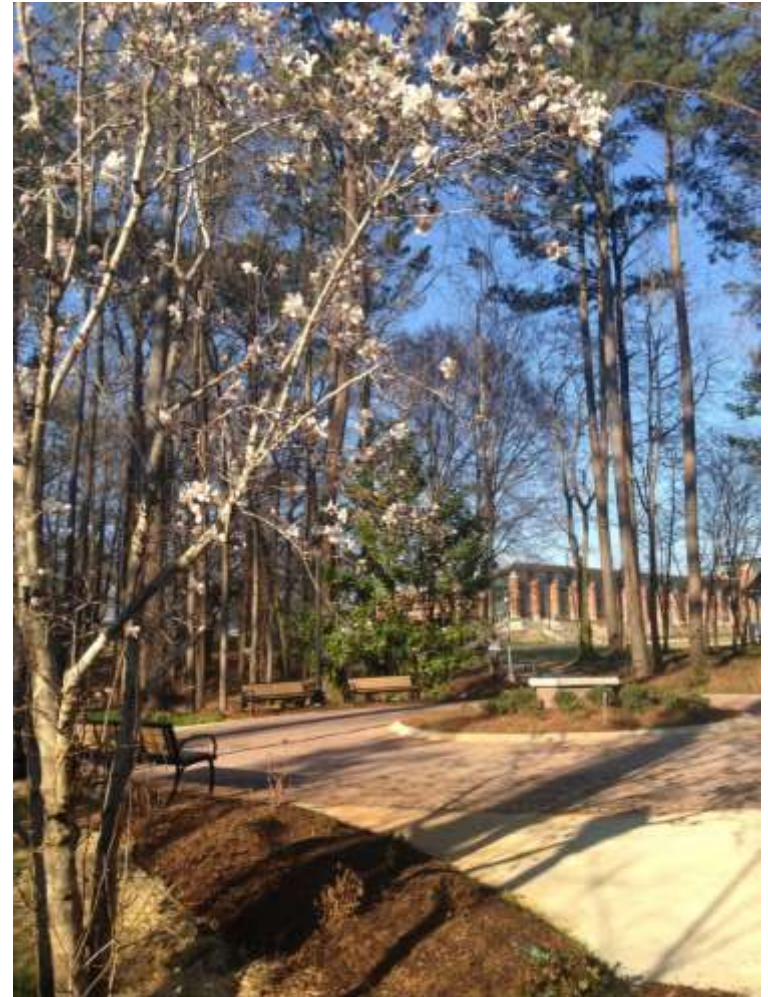
City of Atlanta BeltLine

Atlanta, GA



Carrollton GreenBelt

Carrollton, GA



Panola Mountain State Park Trail System

Rockdale County, GA



Arabia Mountain National Heritage Area

DeKalb and Rockdale Counties, GA



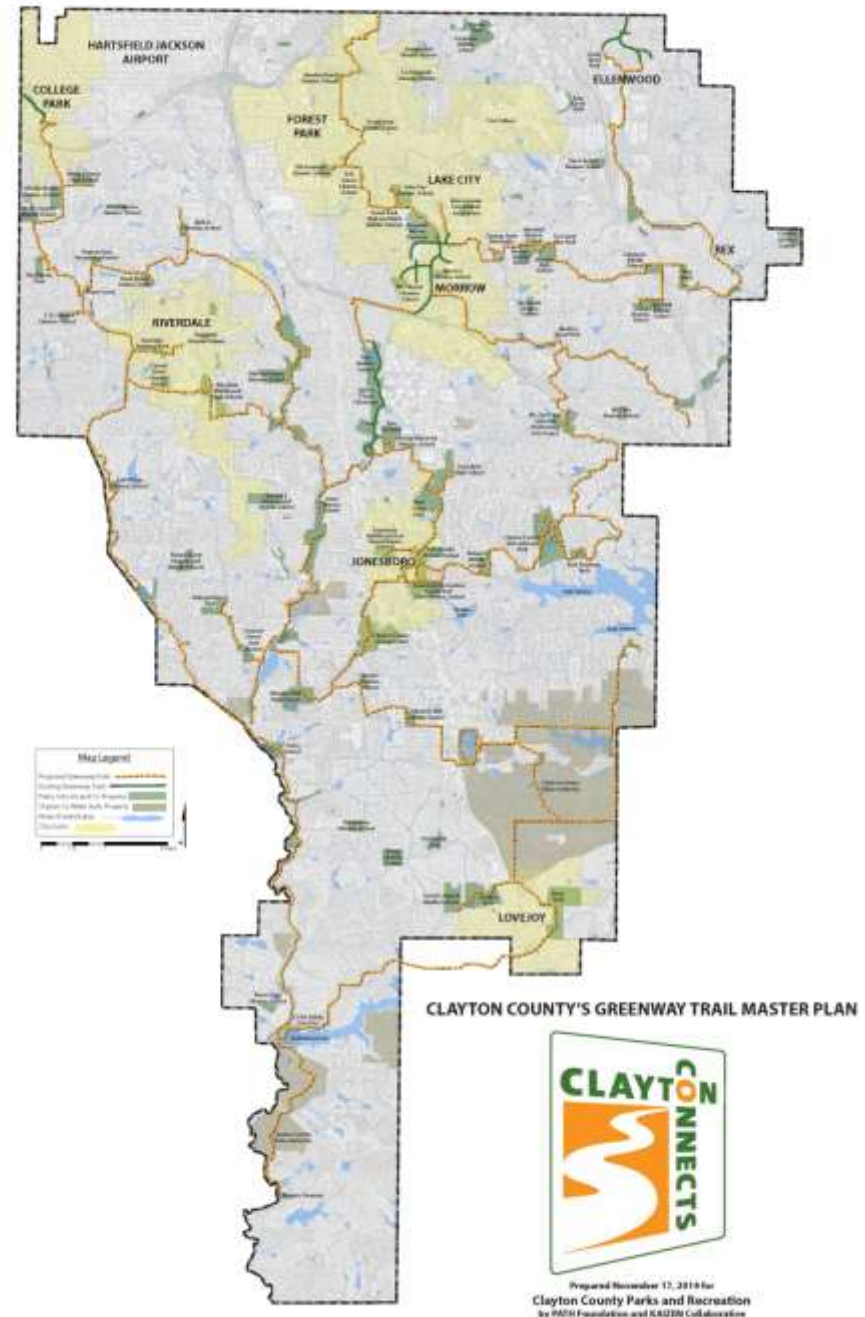
Spanish Moss Trail

Beaufort, SC

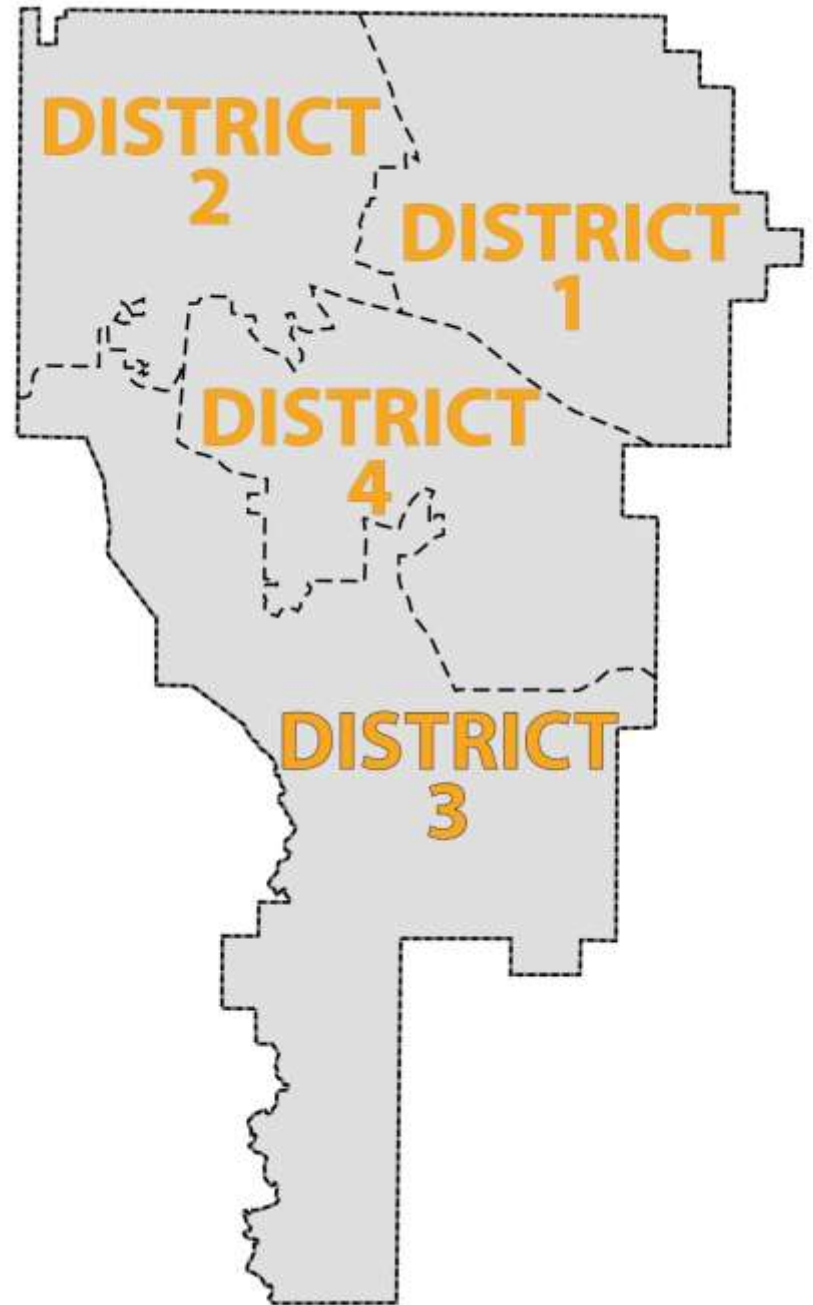


How to Develop a Trail Master Plan

Master Planning = Creating a Vision

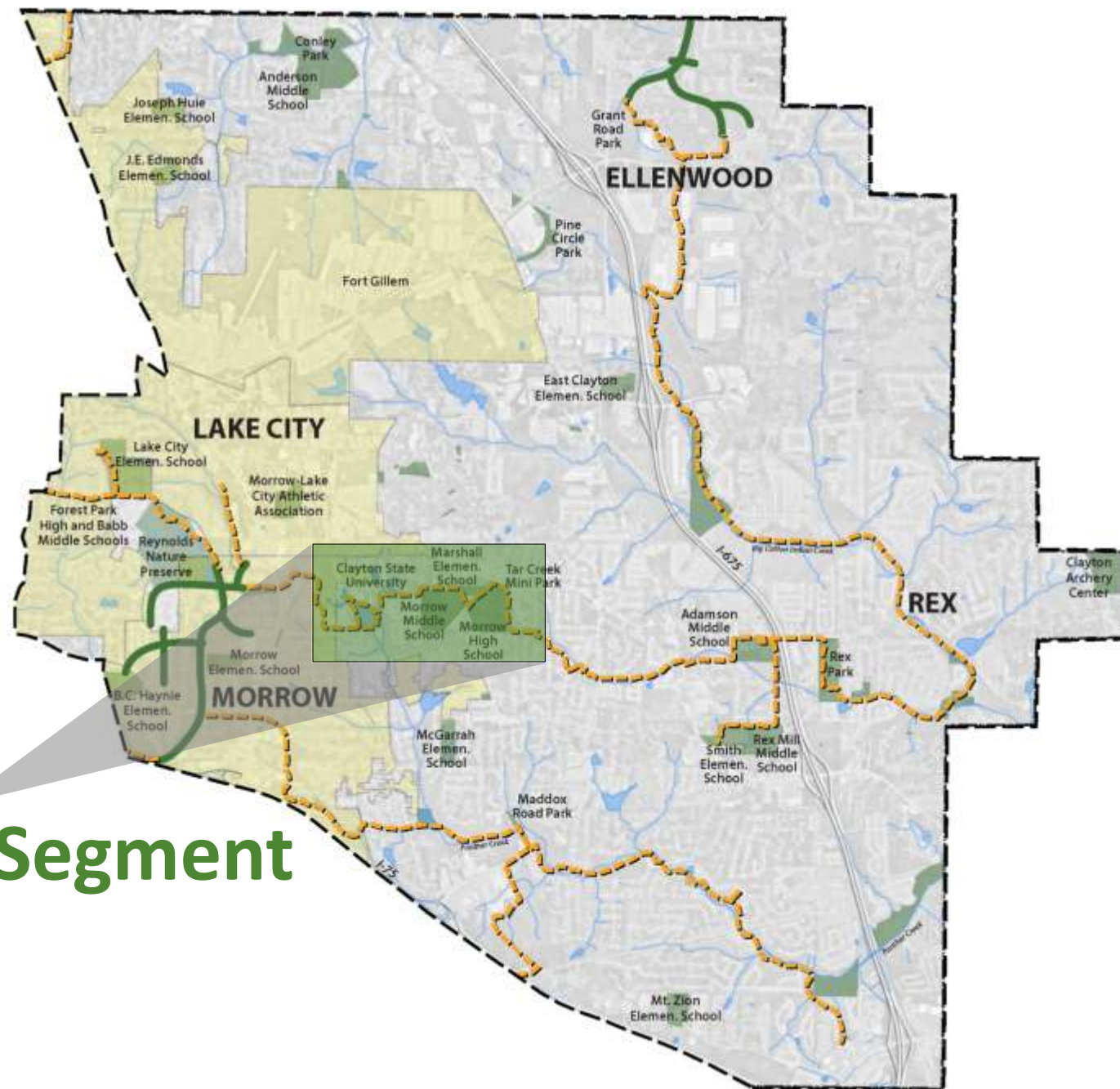


Commission Districts



District 1

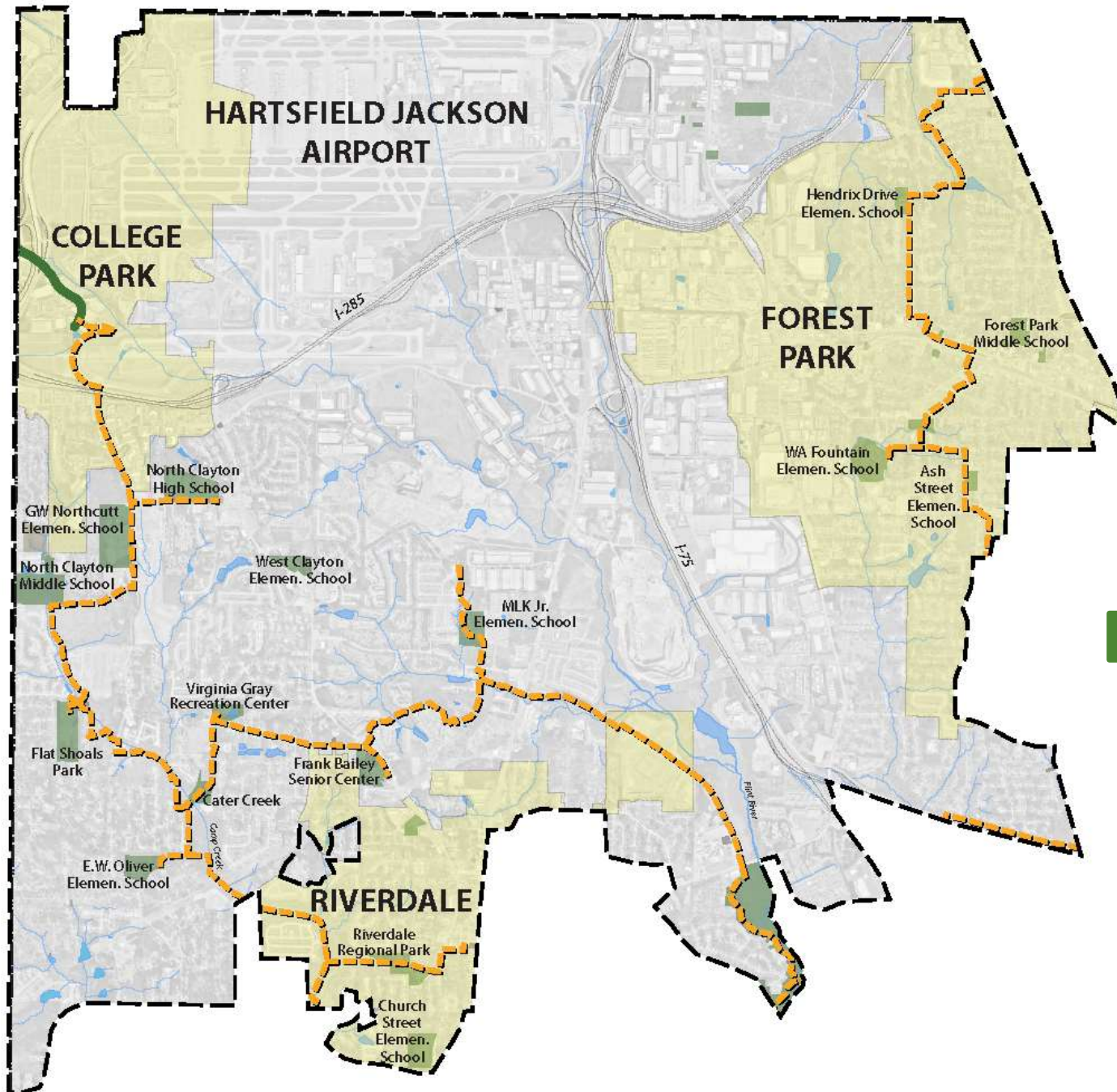




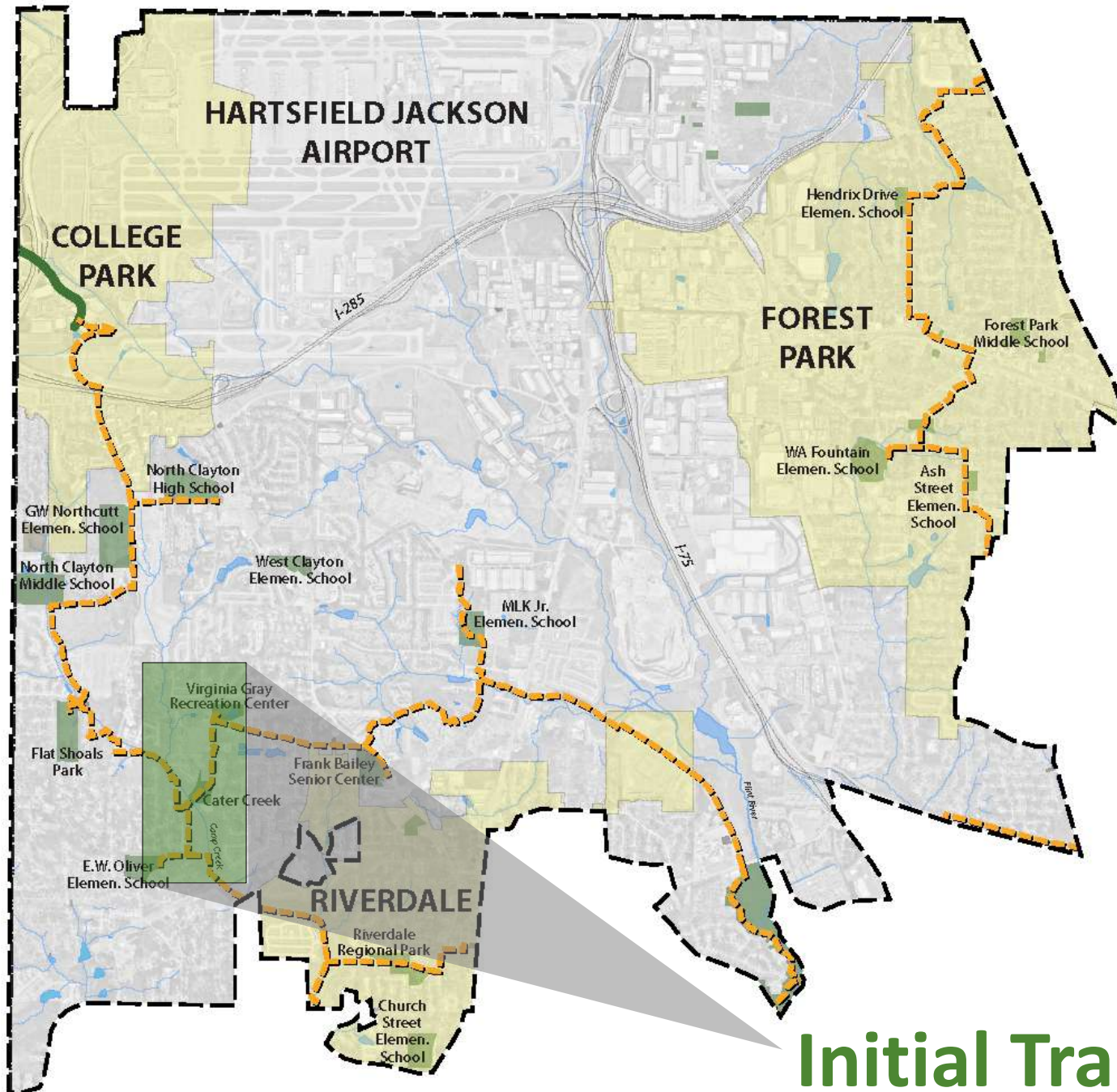
Initial Trail Segment



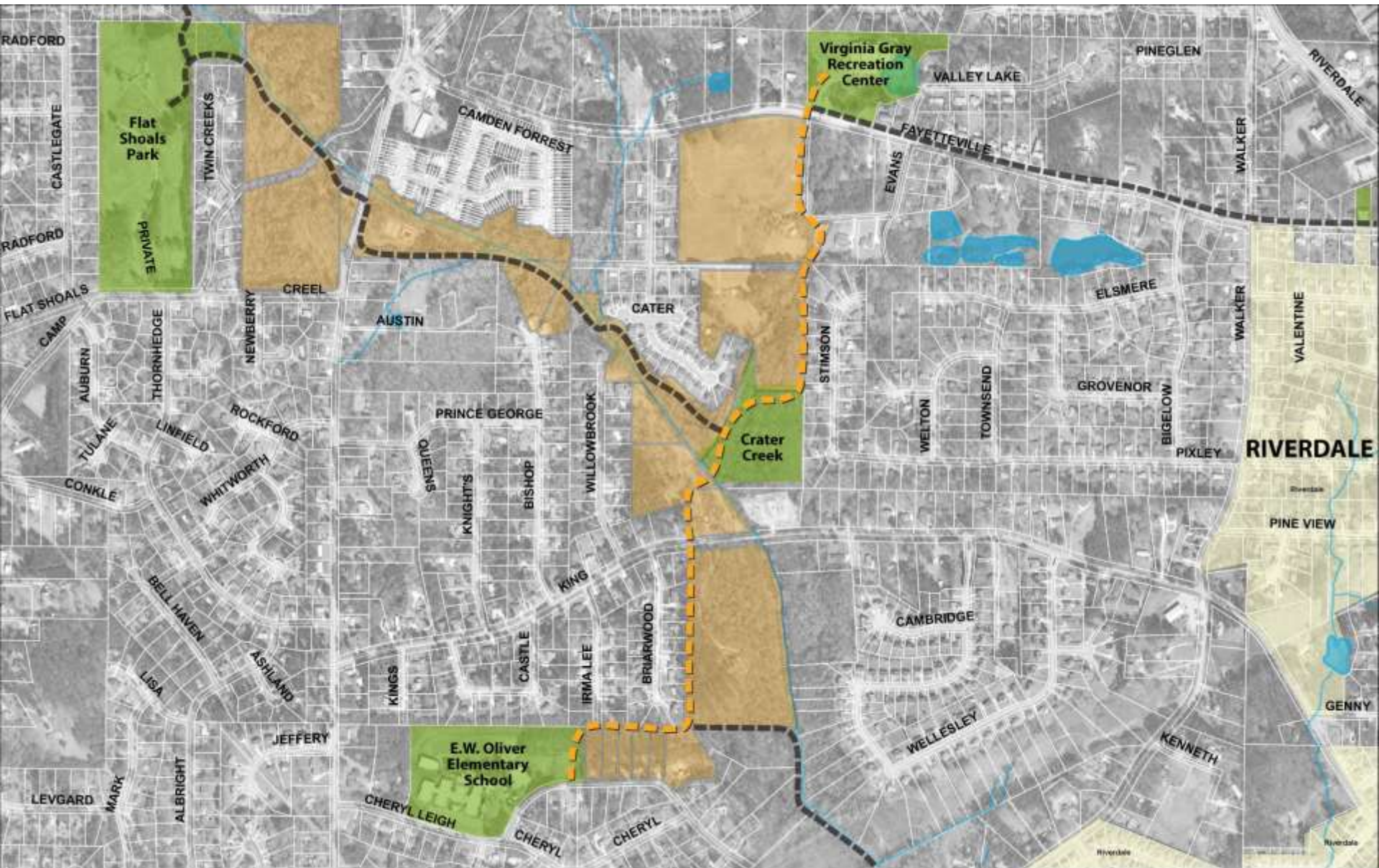
Clayton Connects - District 1 Initial Trail Segment



District 2

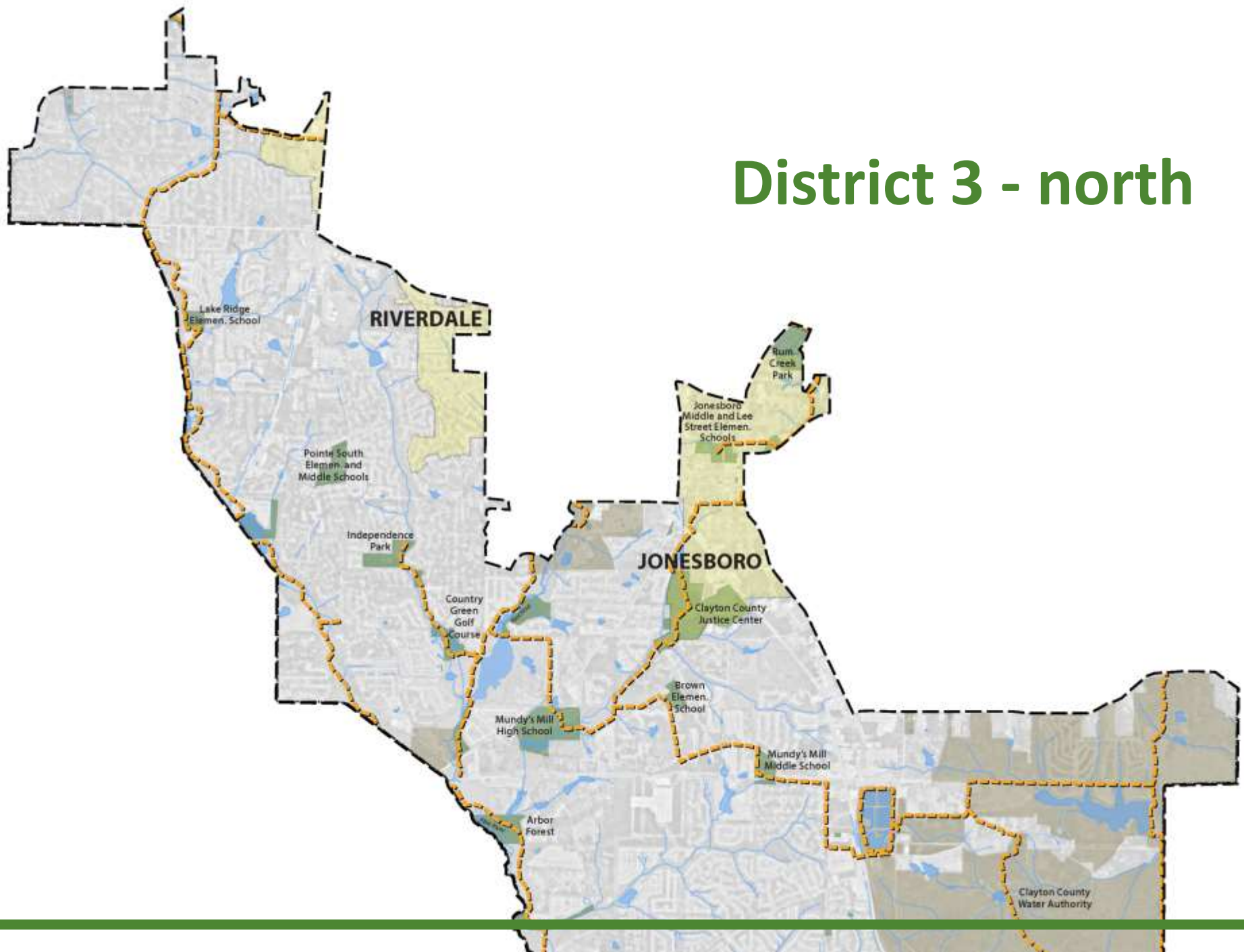


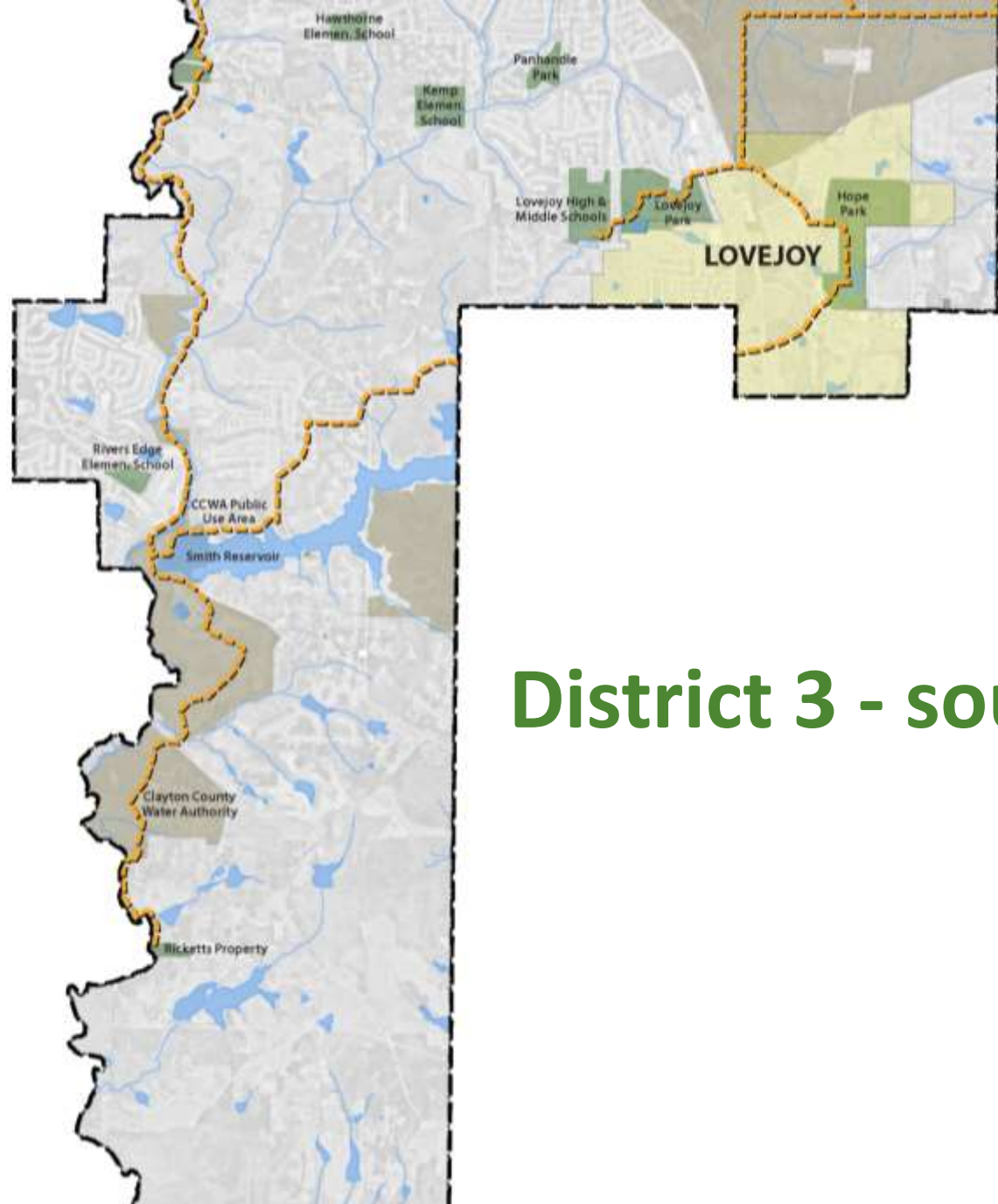
Initial Trail Segment



Clayton Connects - District 2 Initial Trail Segment

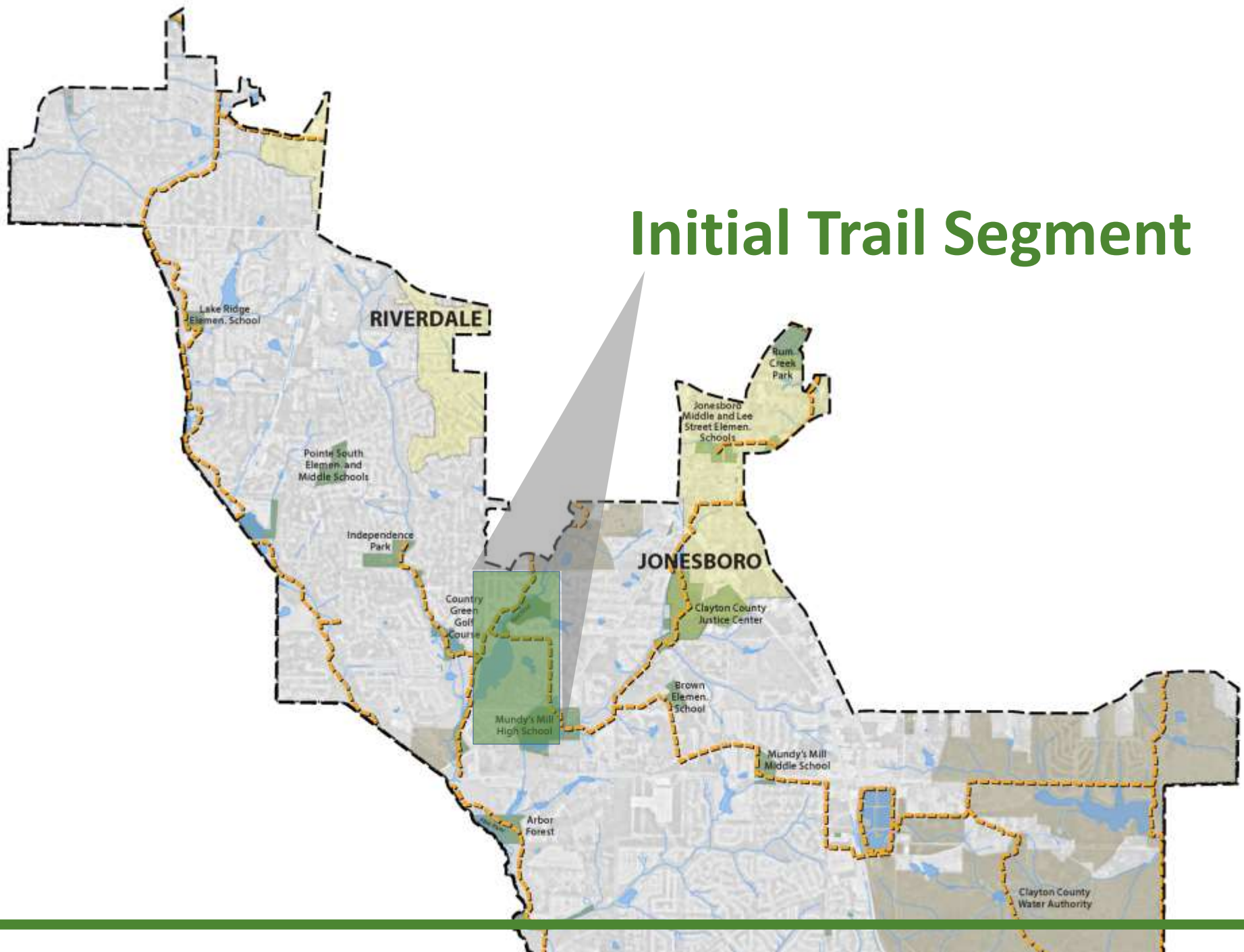
District 3 - north

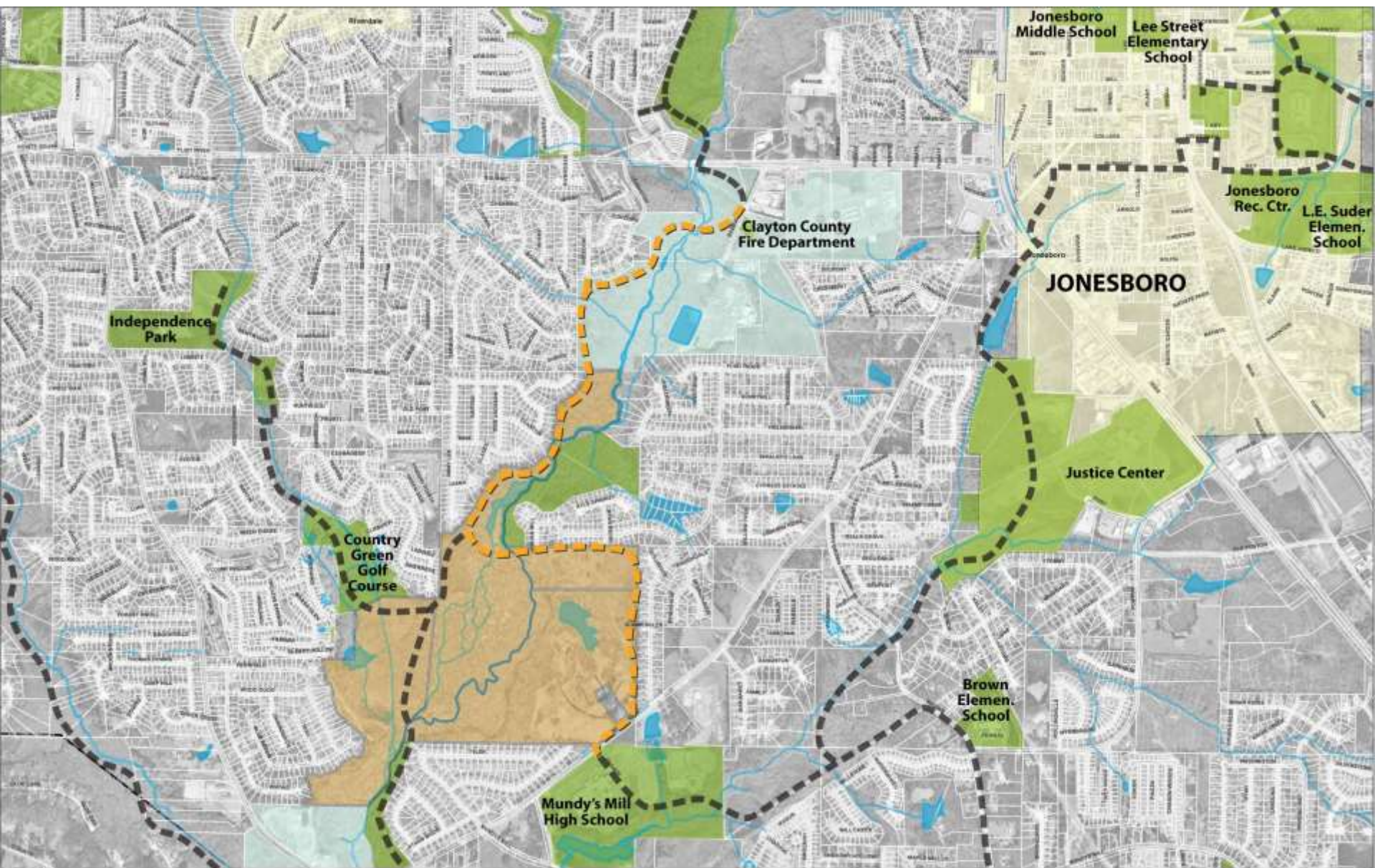




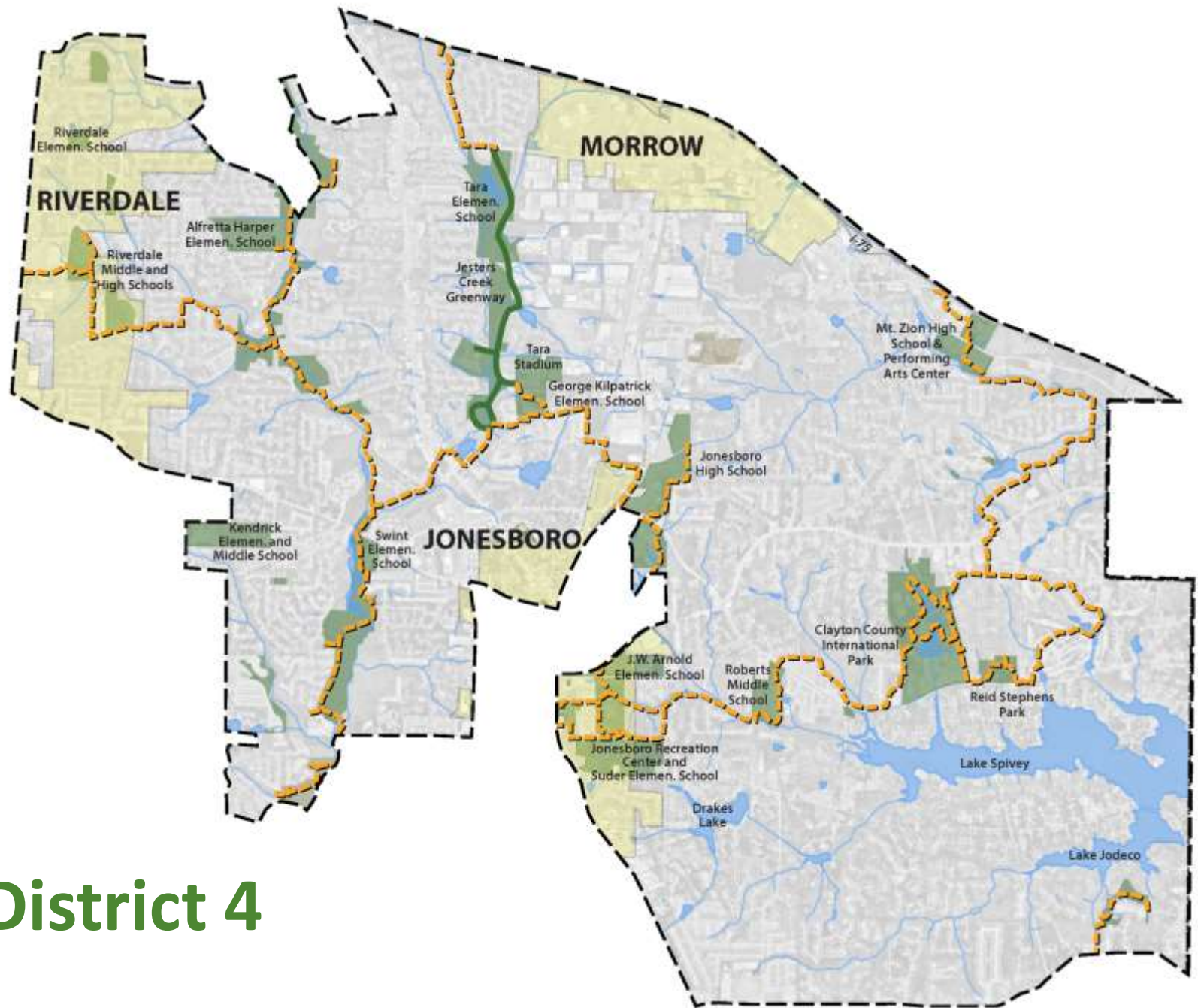
District 3 - south

Initial Trail Segment

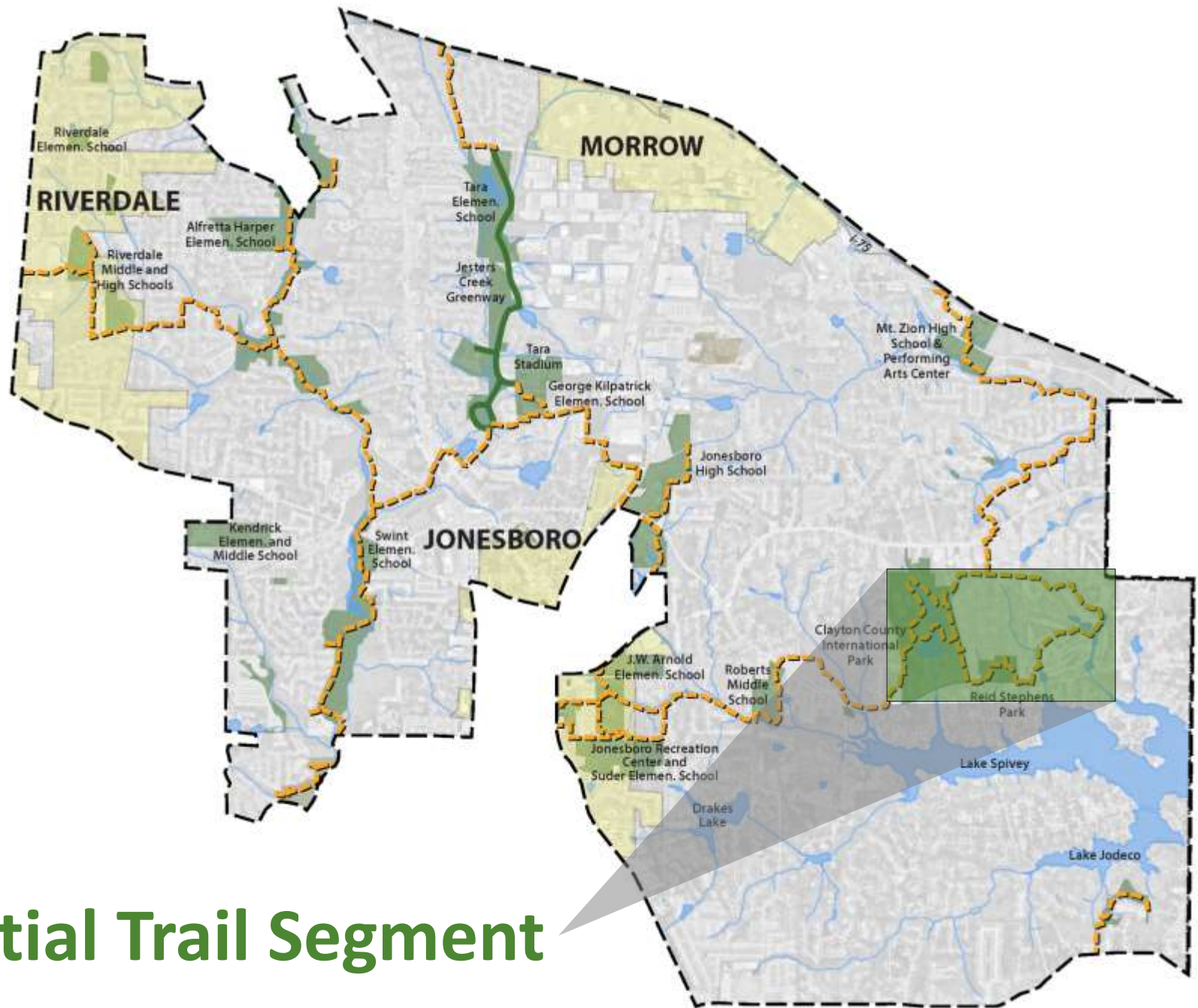




Clayton Connects - District 3 Trail Segment



District 4



Initial Trail Segment



Clayton Connects - District 4 Trail Segments

Trail Signage



Kiosk Sign



Bench/Kiosk Sign



Regulatory Sign



Distance Marker

Trail Amenities



Greensites Series by Victor Stanley

model #CM-324

Description: 6-foot bench, walnut recycled plastic slat seat, ductile iron end frame powder coated black, and surface mounted.



Greensites Series by Victor Stanley

model #CM-314

Description: 6-foot backless bench, walnut recycled plastic slat seat, ductile iron end frame powder coated black, and surface mounted.



Cycle Sentry Series by Victor Stanley

model #BRWS-101

Description: standard u-shaped bike rack, in-ground mount, and steel powder coated black.



Greensites Series by Victor Stanley

model #RTH-36

Description: 36-gallon capacity trash receptacle, walnut recycled plastic side slats, standard tapered form lid powder coated black, black plastic liner, and surface mounted.



Greensites Series by Victor Stanley

model #RTH-36

Description: recycle lid decal and custom band decal to allow standard trash receptacle to be a recycle receptacle.



How to Implement and Fund the Clayton County Greenway Trail System

Next Steps

- **Finalize Clayton County Greenway Trail Master Plan**
 - **Present Master Plan Document to County Commission for Adoption**
 - **Implement each Commission District's Initial Trail Project.**
-

Contact Information

Ed McBrayer, Executive Director
1601 W. Peachtree Street, Atlanta, Georgia 30329
(404) 875-7284
edwin@pathfoundation.org
www.pathfoundation.org



KAIZENCOLLABORATIVE

Greta deMayo, RLA
1668 Belle Isle Circle, NE, Atlanta, Georgia 30329
(404) 626-3519
greta.demayo@kaizencollaborative.com

